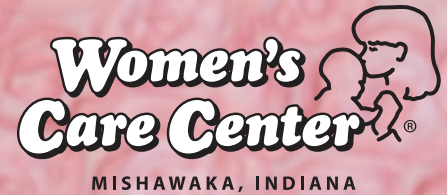


"I was not planning to have her. I just came for the free ultrasound.
But from my first visit, you were right with me.
You were very pro-woman," *says Alexa, mom of baby Violet.*



Baby Violet

BE THE ONE

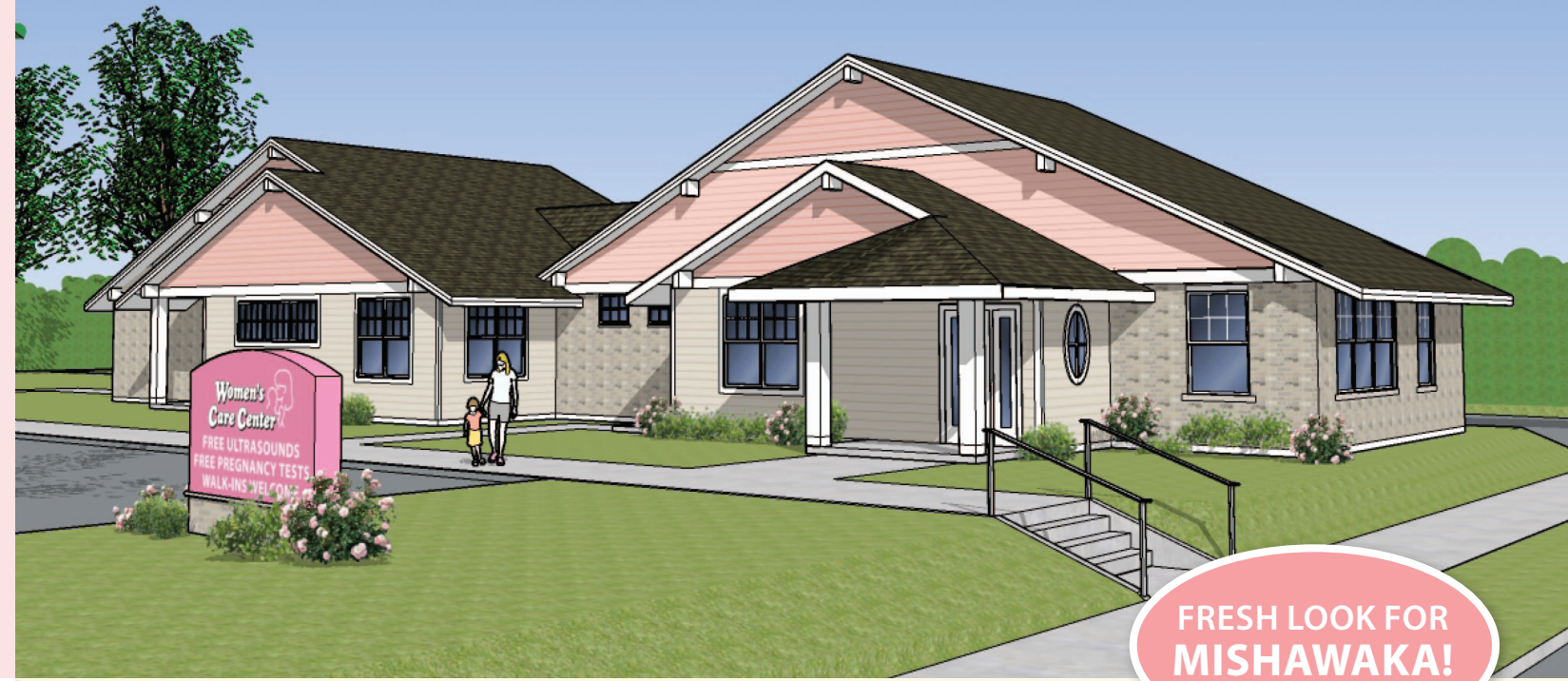
to save MORE babies like Violet!

Unconditionally Loving. Results Driven.

With 34 centers in 12 states, donors like you have made Women's Care Center the largest pregnancy center in the United States...serving more moms and babies than any other. And through classes and the Crib Club, you help long after a baby is born building nurturing and self-sufficient families.

Now, we have the opportunity to grow and expand in our hometown.

But it takes you!



FRESH LOOK FOR MISHAWAKA!

THE NEED

522 pregnant women were served by our Women's Care Center in Mishawaka last year. But half the pregnant women from Mishawaka who needed our help were served in South Bend.

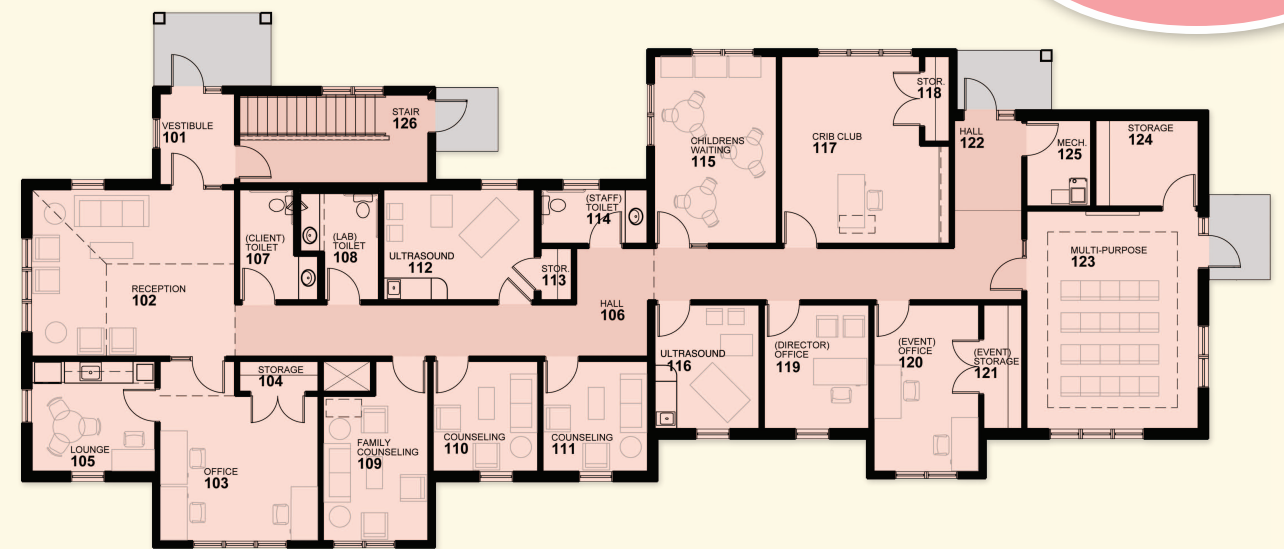
To really make a difference, we have to have an adequate center where the need is. Nearly 30% of Mishawaka children live below the poverty level. This is 82% higher than the state average. We need your help to put Mishawaka children on the right path, right from the start.

MORE VISITS IN MISHAWAKA MEANS HEALTHIER BABIES

Two year study	Average Birth Weight
1-2 visits to Mishawaka center	7 lb. 3 oz.
7 or more visits in Mishawaka	7 lb. 10 oz.

THE SITE AND PLAN

The city of Mishawaka is donating a lot on the corner of Cedar Street and Lincolnway. The busiest street in town. Walkable to many who need us. On multiple bus routes. With your generous support, we can build a highly visible new center that will serve far more Mishawaka women than ever before.



YOU WILL BUILD A CENTER we will never outgrow.

- Three counseling rooms
- A dedicated classroom
- Two ultrasound rooms
- Space for kids — for *Mommy & Me* activities and hands-on learning
- New programs for *First-time Moms*, *Strong Fathers* and *Raising Kids with Character*
- And space for a community health worker (a partnership with the county) to help pregnant women access prenatal care sooner

WITH YOUR HELP, we can replicate the formula that has made Women's Care Center so successful. **Support every step of the way from cradle to kindergarten.**

But it takes YOU to do something this game-changing!

THE BUDGET

Land and parking lot	Donated
Building costs	\$1,500,000*
Furniture, signage and start-up	\$60,000
Contingency allowance	\$100,000
Less value of current center	(-\$150,000)

Net Capital Budget \$1,510,000

*architect estimate

\$1,070,000 still needed to raise

EVERY OTHER BABY BORN
IN ST. JOSEPH COUNTY
starts with Women's Care Center.

And for single moms,
we serve almost 90%.

“There are so many places
and towns that don’t
have support like this.”

says Autumn, mom of baby Alexis.



Baby Alexis

Your generous lead gift will personally touch the lives of thousands of moms, babies and families.
And every time a woman walks through our door and chooses life...it will be because of YOU!

You may never know her. You may never meet her.
But her legacy will be your legacy!

There is no greater return on your philanthropic investment.



We would love to hear from you!

Katherine Kelly
Executive Outreach Director
(574) 993-0004
katherine@supportwcc.org



Emily Rose
Outreach Director
(571) 276-5797
emily@supportwcc.org

Ways to Give to the New Women’s Care Center Mishawaka

Tax I.D. #35-1609945 — All gifts are 100% tax-deductible.

CHECK:

Mail your gift payable to
“Women’s Care Center Mishawaka”
to 360 N. Notre Dame Avenue
South Bend, Indiana 46617

ONLINE:

NewMishawakaCenter.org

STOCK:

Women’s Care Center Brokerage Information
Wells Fargo Advisors, LLC
Account Number: 6794-6738
DTC#0141

Women’s Care Center is the only pregnancy center to receive the Evangelium Vitae Award from the University of Notre Dame DeNicola Center for Ethics and Culture. This national award is presented annually to heroes in the pro-life movement.

